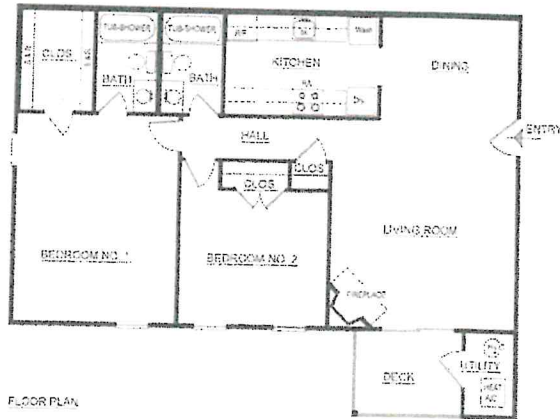


Introducing a new apartment community featuring all two bedroom units with all the modern amenities. This community provides a convenient location that gives residents easy access to Wilmington, Newark and TOLL FREE access to I-95. Located adjacent is Suburban Plaza Shopping Center with Acme, Happy Harry's, Wilmington Trust and many more restaurants, merchants and services.



Millstone Plaza Apartments

- Large Apartments over 1100 sq.ft.
- Private outside entrances
- All 2 bedroom units
- Fully applianced kitchens with refrigerator, range w/self cleaning oven, microwave range hood, dishwasher, disposal, washer & dryer
- Gas fireplaces on 2nd and 3rd floors
- Central air conditioning
- Wall to wall carpeting
- Ceramic tile flooring in entry, kitchen, and bathrooms
- Energy efficient gas heat
- Cable ready
- Multiple phone lines
- Beautifully appointed bathrooms
- All units have a patio or deck
- Fully sprinkled for fire safety
- Security systems in all units (Note: outside monitoring is optional @ \$20/month)
- HANDICAP ACCESSIBLE APARTMENTS AVAILABLE
- Flexible lease terms
- A maximum of two cats permitted with a pet deposit of \$500 refundable pet fee.
- Walk-in closets in master bedroom



For additional information on Millstone Plaza Apartments or to schedule a personal tour,

2BR/1BA \$1450/mo + \$1450 Security Dep. (first floor)

2BR/2BA \$1550/mo + \$1550 Security Dep. (2nd/3rd floor)

Senior/Veteran Discount (first floor) \$1400/mo

Professional leasing and management services provided by
 Delaware Property Management, LLC
 (302)366-0208



Delaware Property Management, LLC
(302) 366-0208

MILLSTONE PLAZA APTS.

Next Door to Suburban Plaza Shopping Center Elkton Rd, Newark, DE

2 BEDROOM APTS AVAILABLE

Rental Rates

Floor	#1	\$1450/mo (2BR/1BA)
	All others	\$1550/mo (2BR/2BA)

Security Deposit: Equals One Month's Rent

SPECIAL SENIOR & VETS DISCOUNT OFFERED

Seniors & Vets

1st Floor Units Only \$1400/mo

Must meet Age Requirement- Minimum 62 yrs.

@ time of move-in!

Details

Master Bedroom
13 ¼ x 17
2 nd Bedroom
10 ¾ x 12